

SLM = 19.33 $\times 5280 = 102066.2$
+026
1020+62.40

O.D.O.T. DISTRICT 2 SURVEY OFFICE (USE ONLY)

PERSONNEL

REFERENCE NO. 30

SHEET 1 OF 23

NOTES ~~HUSS~~ **JAB**

DATE ~~9/13/05~~ **7/1/24**

ROUTE SR 65

H.C. ~~HOMAN~~ **JAM**

WEATHER ~~CLOUDY~~ **SUNNY**

COUNTY WOOD

R.C. ~~MIKLOVIC~~ **CCB**

TEMP. ~~-72°~~ **65°**

TOWNSHIP PERRYSBURG

SECTION RT 68

DWG BY RHOADES PID

T 4 12 MILE RESERVE

TYPE MONUMENT MONBOX W/1" IPIN

ON SURFACE - ~~BELOW~~ ON

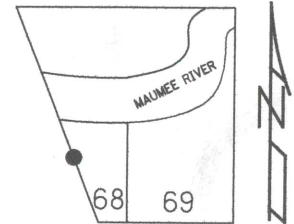
OFFSET Q PAVEMENT 7.3' LT: ~~RT~~

 TO EDGE PAVEMENT

STATION: 1003+60

HORZ. DATUM: GEOID:

GRID: NORTHING: EASTING:

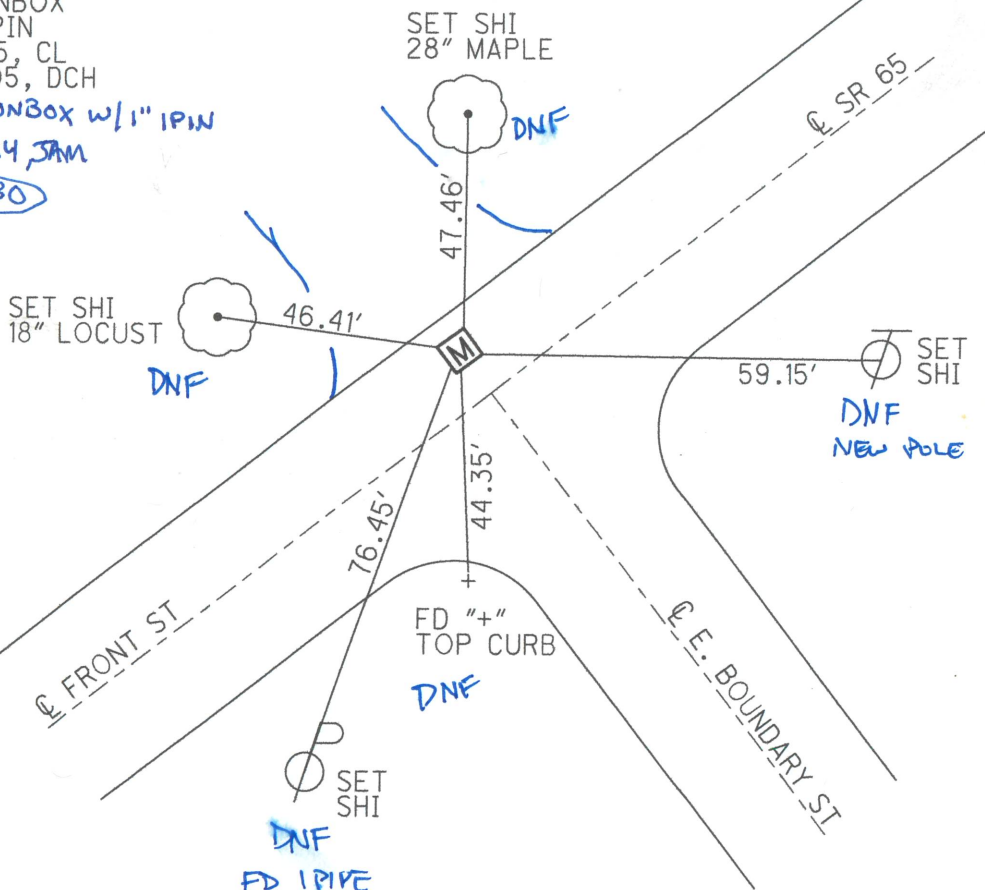


NOT WITHIN PROJECT LIMITS

RECORD: P.I.
STA. 0+00
1937 PLANFD R.R. SPIKE
FD P.K. NAIL
5/22/72, BURNSIDE
FD MONBOX
W/1" IPIN
6/4/85, CL
9/13/05, DCH

FD MONBOX W/1" IPIN
7/1/24, JAM

REF30



O.D.O.T. DISTRICT 2 SURVEY OFFICE (USE ONLY)

PERSONNEL

REFERENCE NO. 30 A

SHEET 2 OF 23

NOTES ~~HUSS~~ JAM

DATE ~~9/13/05~~ 7/11/24

ROUTE SR 65

H.C. ~~HOMAN~~ JAM

WEATHER SUNNY

COUNTY WOOD

R.C. ~~MIKLOVIC~~ CCB

TEMP. 78°

TOWNSHIP PERRYSBURG

SECTION RT 68

DWG BY RHOADES PID _____

T 3 12 MILE RESERVE

TYPE MONUMENT MAG/WASHER

ON SURFACE - ~~BELOW~~ ON

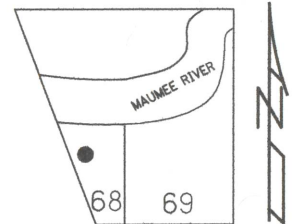
OFFSET 9.5' RT

1.6' TO RT EDGE PAVEMENT

STATION: 1007+89

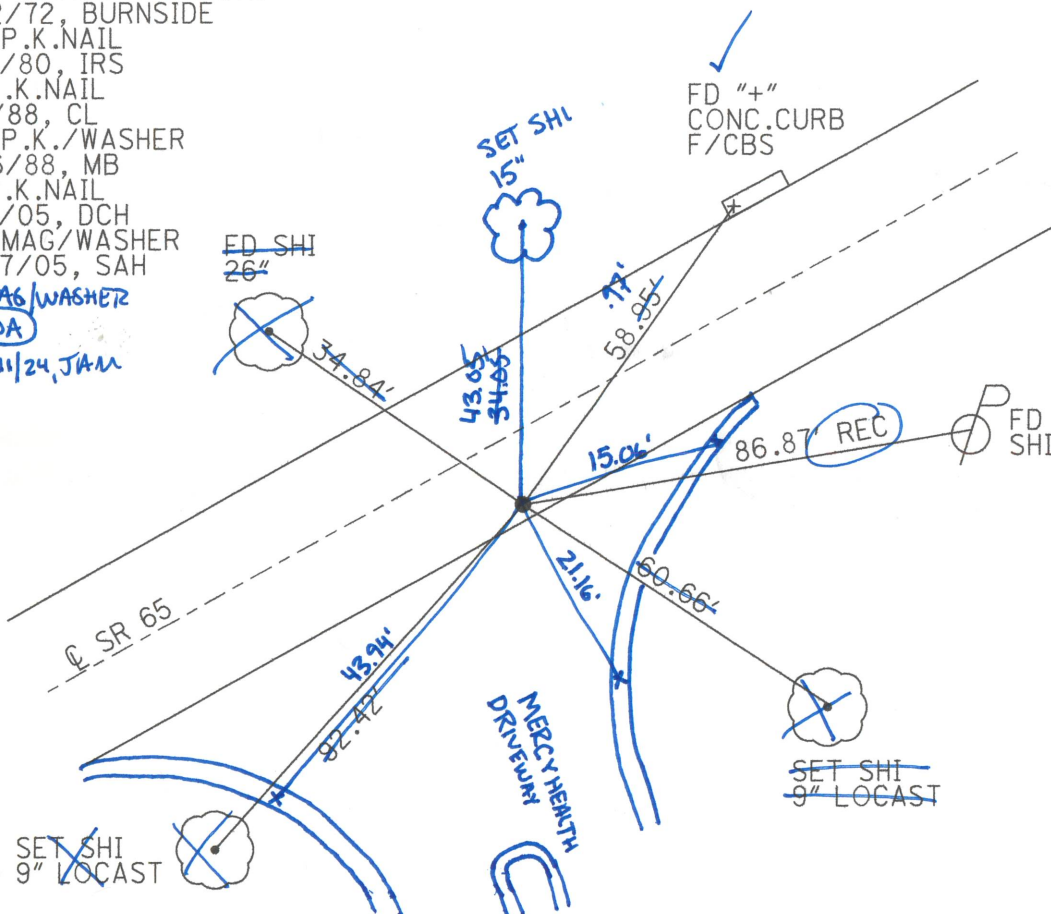
HORZ.DATUM: _____ GEOID: _____

GRID: NORTHING: _____ EASTING: _____



RECORD: P.I.
STA. 3+79.55
1937 PLANS
 $\Delta = 12^\circ 50'$ LT
FD R.R. SPIKE
FD IRON BLOT
ATOP BRASS R/W MON.
5/22/72, BURNSIDE
SET P.K. NAIL
11/13/80, IRS
FD P.K. NAIL
5/2/88, CL
SET P.K./WASHER
8/26/88, MB
FD P.K. NAIL
9/13/05, DCH
SET MAG/WASHER
10/27/05, SAH

FD MAG/WASHER
REF 30A
7/11/24, JAM



O.D.O.T. DISTRICT 2 SURVEY OFFICE (USE ONLY)

PERSONNEL

REFERENCE NO. 30 B

SHEET 1 OF 8

NOTES ~~HUSS~~ **JAB**

DATE ~~9/13/05~~ **7/1/24**

ROUTE SR 65

H.C. ~~HOMAN~~ **JAM**

WEATHER SUNNY

COUNTY WOOD

R.C. ~~MIKLOVIC~~ **CCB**

TEMP. ~~78°~~ **73F**

TOWNSHIP PERRYSBURG

DWG BY NIESE PID -

SECTION RT 69

T 3 12 MILE RESERVE

TYPE MONUMENT SM.R.R.SPIKE

ON SURFACE - ~~BELOW~~ ON

OFFSET 6.5' TO RT EDGE PAVEMENT

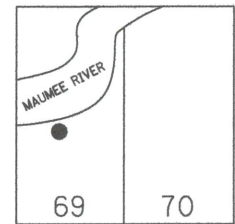
STATION: 1035+75

HORIZ.DATUM: NAD83(2011)

GEOID: 2012A

GRID: NORTHING: 695424.330

EASTING: 1665032.098



RECORD: P.I.

1937 Q SURVEY

Q RW

STA. 31+66.4

$\Delta = 9^\circ 50'$ LT

SET MAG/WASHER

10/28/05, SAH

FD MAG/WASHER

REFB30

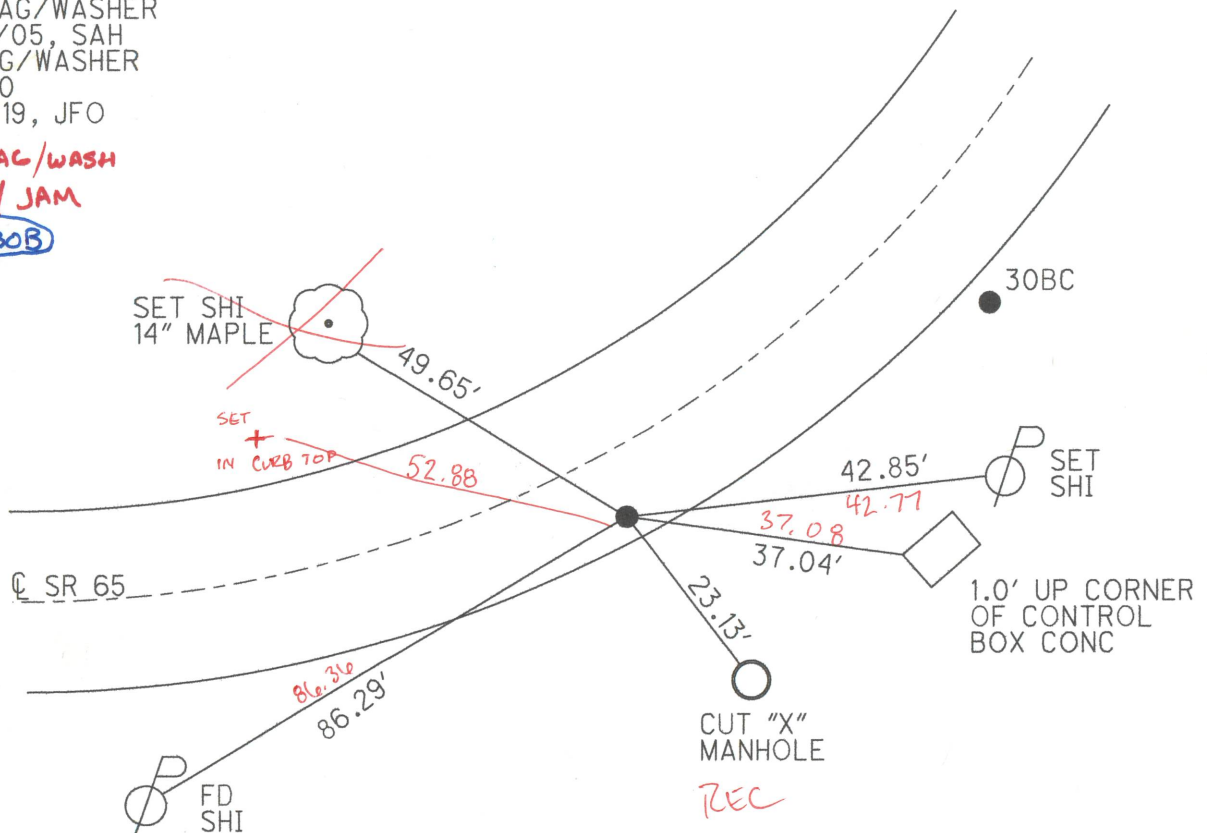
12/16/19, JFO

FD MAG/WASH

7/1/24/ JAM

REFB30B

DIST. 30B-30BC= 64.73'



O.D.O.T. DISTRICT 2 SURVEY OFFICE (USE ONLY)

PERSONNEL

REFERENCE NO. 30 BC

SHEET 2 OF 8

NOTES ~~HUSS~~ **JAB**

DATE ~~9/13/05~~ **7/1/24**

ROUTE SR 65

H.C. ~~HOMAN~~ **JAM**

WEATHER SUNNY **SUN**

COUNTY WOOD

R.C. ~~MIKLOVIC~~ **CCB**

TEMP. 78° **74°**

TOWNSHIP PERRYSBURG

DWG BY NIESE PID -

SECTION RT 69

T 3 12 MILE RESERVE

TYPE MONUMENT P.K./WASHER

ON SURFACE - ~~BELOW~~ ON

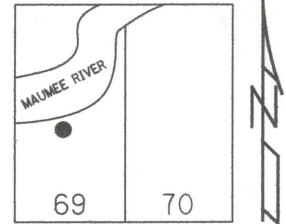
OFFSET CL PAVEMENT 14.5' ~~LT~~ : RT

2.5' TO RT EDGE PAVEMENT

STATION: 1036+40

HORZ.DATUM: NAD83(2011) GEOID: 2012A

GRID: NORTHING: 695462.039 EASTING: 1665084.641



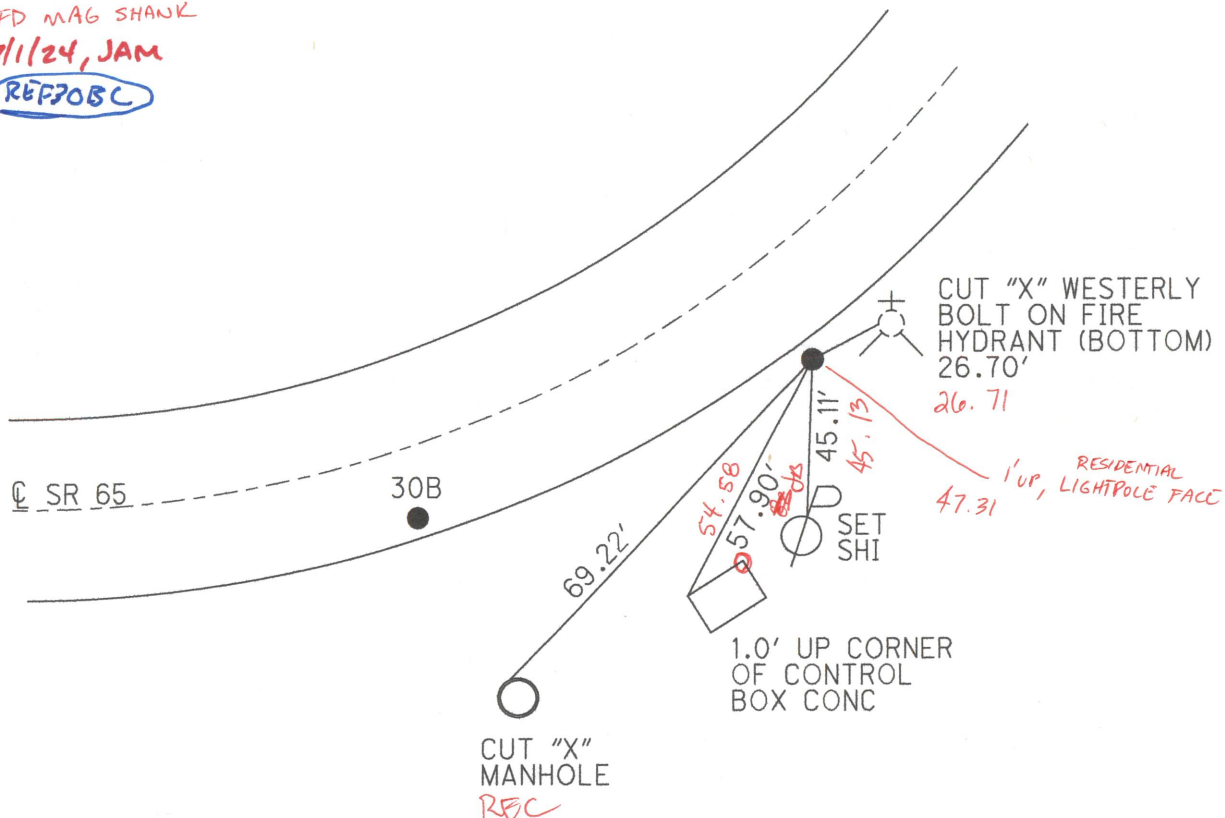
RECORD:
STA 32+31.06
CL CONSTRUCTION
 $\Delta = 9^\circ 50' \text{ LT}$
SET MAG/WASHER
10/28/05, SAH
FD MAG/WASHER
REFBC30
12/16/19, JFO

DIST. 30B-30BC=64.73'

FD MAG SHANK

7/1/24, JAM

REF30BC



O.D.O.T. DISTRICT 2 SURVEY OFFICE (USE ONLY)

PERSONNEL

REFERENCE NO. 30 C

SHEET 3 OF 8

NOTES ~~HOFFMAN~~ JAB

DATE 4/4/85 7/1/24

ROUTE SR 65

H.C. BARNHISEL JAM

WEATHER CLOUDY

COUNTY WOOD

R.C. LOEHRKE CCB

TEMP. 50° 70

TOWNSHIP PERRYSBURG

SECTION RT 69

DWG BY NIESE PID -

T 3 12 MILE RESERVE

TYPE MONUMENT SANDSTONE W/ DRILLH

ON SURFACE - ~~BELOW~~ ON

OFFSET Q PAVEMENT 41.00' ± : RT

25.7' TO RT EDGE PAVEMENT

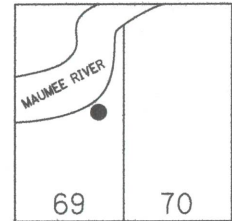
STATION: 1044+34

HORZ.DATUM: NAD83(2011)

GEOID: 2012A

GRID: NORTHING: 696064.792

EASTING: 1665602.426

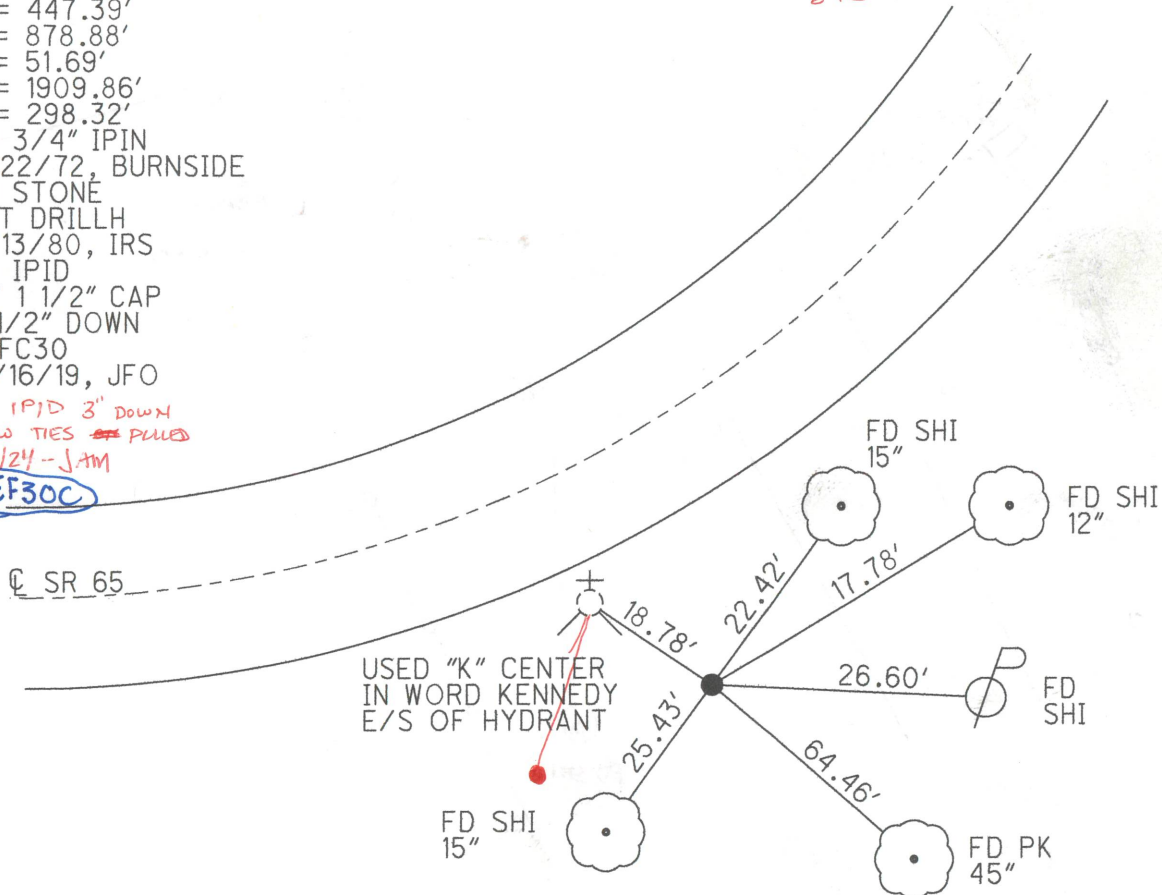


RECORD: P.I.
1937 Q SURVEY
STA.40+25.7
 $\Delta = 26^\circ 22' LT$
 $D = 3^\circ 00'$
 $T = 447.39'$
 $L = 878.88'$
 $E = 51.69'$
 $R = 1909.86'$
 $T = 298.32'$
FD 3/4" IPIN
5/22/72, BURNSIDE
FD STONE
SET DRILLH
11/13/80, IRS
FD IPID
W/ 1 1/2" CAP
3 1/2" DOWN
REFC30
12/16/19, JFO

FD IPID 3" DOWN
NEW TIES ~~PLACED~~
7/1/24 - JAM

REF30C

NEW DRAWING ON BACK



O.D.O.T. DISTRICT 2 SURVEY OFFICE (USE ONLY)

PERSONNEL

REFERENCE NO. 30 D

SHEET 4 OF 8

NOTES BARNHISEL

DATE 5/2/88

ROUTE SR 65

H.C. REED

WEATHER SUNNY

COUNTY WOOD

R.C. LOEHRKE

TEMP. 70°

TOWNSHIP PERRYSBURG

HOFFMAN

SECTION RT 69

DWG BY NIESE

PID -

T 3 12 MILE RESERVE

TYPE MONUMENT 3/4" IPIN

~~ON SURFACE~~ - BELOW 12"

OFFSET Q PAVEMENT 46.3' LT : ~~RT~~

31.2' TO LT EDGE PAVEMENT

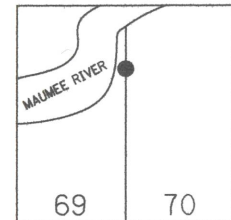
STATION: 1052+43

HORZ.DATUM: -

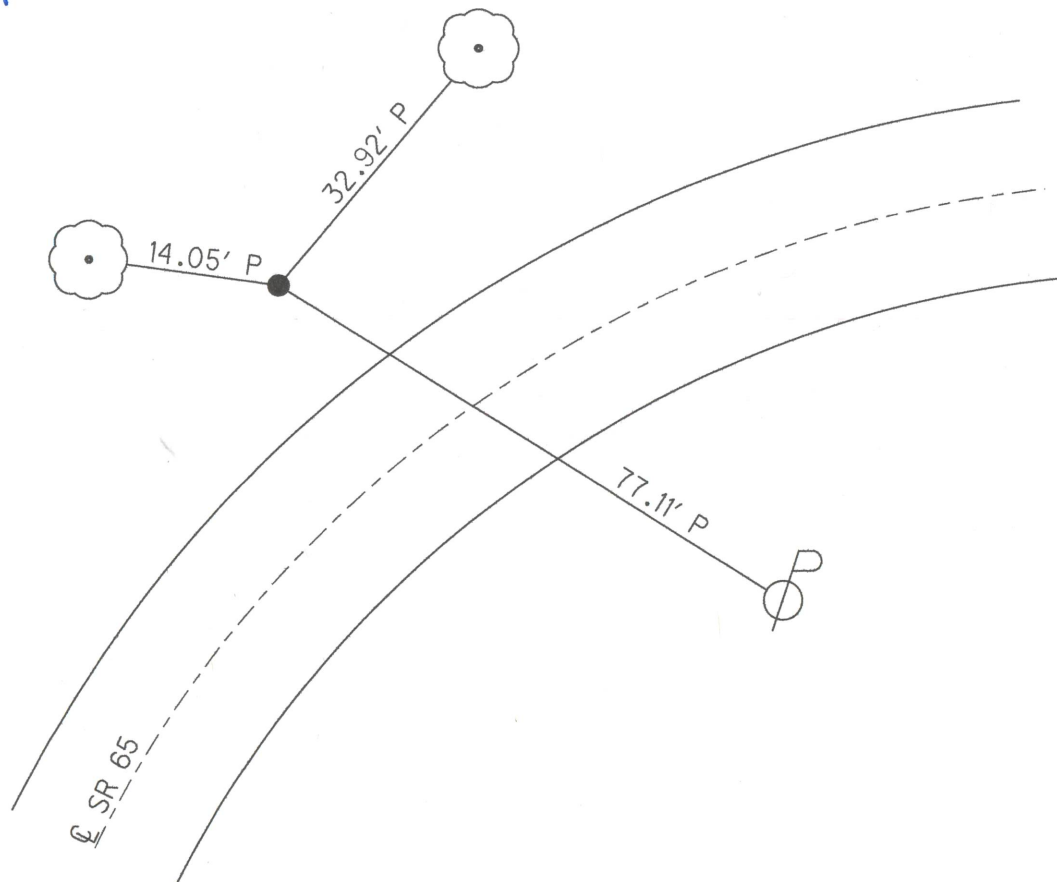
GEOID: -

GRID: NORTHING: -

EASTING: -



RECORD: P.I.
1937 Q SURVEY & RW
STA. 48+54.2
 $\Delta = 32^\circ 09' RT$
DNF
12/16/19, JFO
D.N.F, JAM



O.D.O.T. DISTRICT 2 SURVEY OFFICE (USE ONLY)

PERSONNEL

REFERENCE NO. 30 E

SHEET 5 OF 21

NOTES AUBLE JAB

DATE 5/8/23 7/1/24

ROUTE SR 65

H.C. NIESE JAM

WEATHER CLOUDY SNOWY

COUNTY WOOD

R.C. AUBLE CCB

TEMP. 55° 70°

TOWNSHIP PERRYSBURG

SECTION RT 70

DWG BY RHOADES

PID PAVING TRAIN

T 3

12 MILE RESERVE

TYPE MONUMENT MAG/WASHER

ON SURFACE - ~~BELOW~~ ON

OFFSET Q PAVEMENT 7.1' LT : RT

4.8' TO LT EDGE PAVEMENT

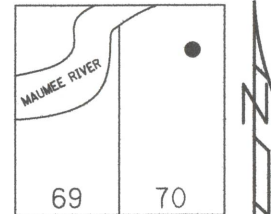
STATION: 1066+22

HORZ.DATUM: NAD83 2011

GEOID: NAVD88 2018

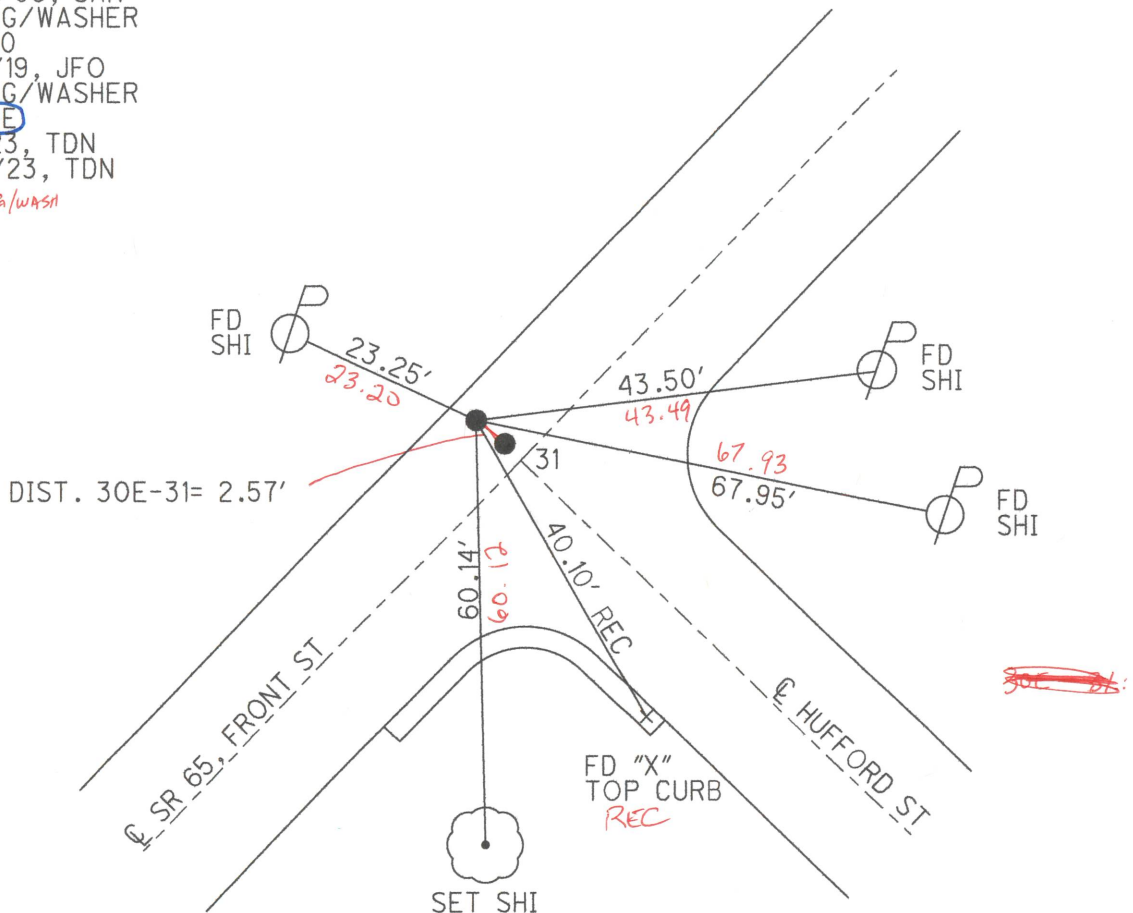
GRID: NORTHING: 697801.237

EASTING: 1666843.670



RECORD:
SET MAG/WASHER
10/28/05, SAH
FD MAG/WASHER
REFE30
12/16/19, JFO
FD MAG/WASHER
REF30E
5/8/23, TDN
10/12/23, TDN
FD MAG/WASH
7/1/24

WOOD LPD:
N: 519831.728
E: 177026.605



O.D.O.T. DISTRICT 2 SURVEY OFFICE (USE ONLY)

PERSONNEL

REFERENCE NO. 31

SHEET 6 OF 21

NOTES AUBLE JAB

DATE 5/8/23

ROUTE SR 65

H.C. NIESE JAM

WEATHER CLOUDY

COUNTY WOOD

R.C. AUBLE CCS

TEMP. 55°

TOWNSHIP PERRYSBURG

SECTION RT 70

DWG BY RHOADES

PID PAVING TRAIN

T 3

12 MILE RESERVE

TYPE MONUMENT MAG/WASHER

ON SURFACE - ~~BELOW~~ ON

OFFSET Q PAVEMENT 4.6' LT: ~~RT~~

7.4' TO LT EDGE PAVEMENT

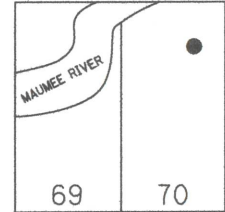
STATION: 1066+22

HORZ. DATUM: NAD83 2011

GEOID: NAVD88 2018

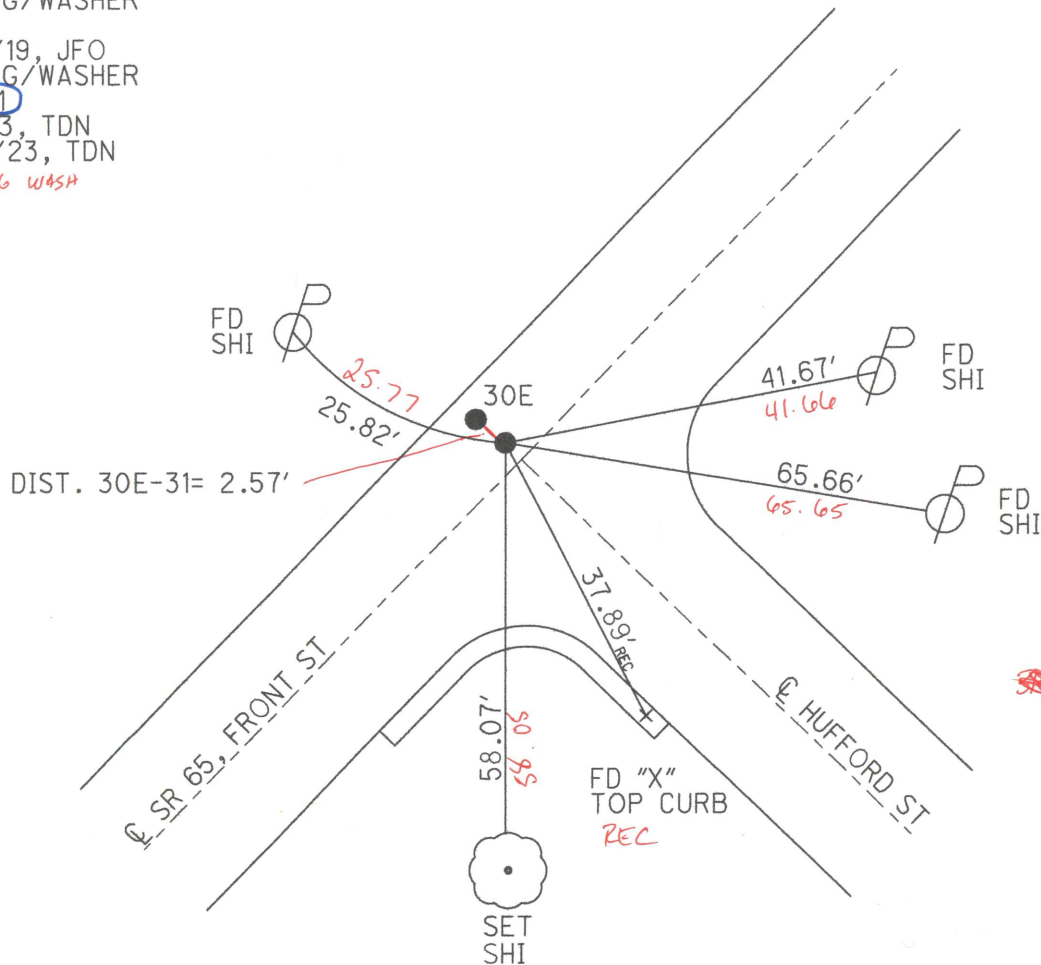
GRID: NORTHING: 697799.288

EASTING: 1666845.401



RECORD:
SET MAG/WASHER
10/28/05, SAH
FD MAG/WASHER
REF31
12/16/19, JFO
FD MAG/WASHER
REF 31
5-8-23, TDN
10/12/23, TDN
FD MAG WASH
7/1/24

WOOD LPD:
N: 519829.802
E: 177028.361



O.D.O.T. DISTRICT 2 SURVEY OFFICE (USE ONLY)

PERSONNEL

REFERENCE NO. 31 A

SHEET 7 OF 21

NOTES AUBLE JAB

H.C. NIESE JAB

R.C. AUBLE CCB

DATE 5-8-23 ~~7/11/24~~

WEATHER CLOUDY ~~SUNNY~~

TEMP. 55° F ~~70°~~

ROUTE SR 65

COUNTY WOOD

TOWNSHIP PERRYSBURG

SECTION RT 70

DWG BY AUBLE PID PAVING TRAIN

T 3 12 MILE RESERVE

TYPE MONUMENT MAG/ WASHER

ON SURFACE - ~~BELOW~~ ON

OFFSET Q PAVEMENT 7.2' LT : RT

4.7' TO LT EDGE PAVEMENT

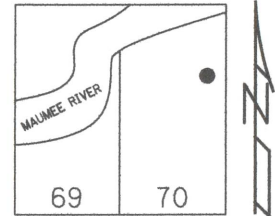
STATION: 1070+08

HORIZ.DATUM: NAD83 2011

GEOID: NAVD88 2018

GRID: NORTHING: 698062.320

EASTING: 1667128.321



OHIO LDP: 520016.679

177307.750

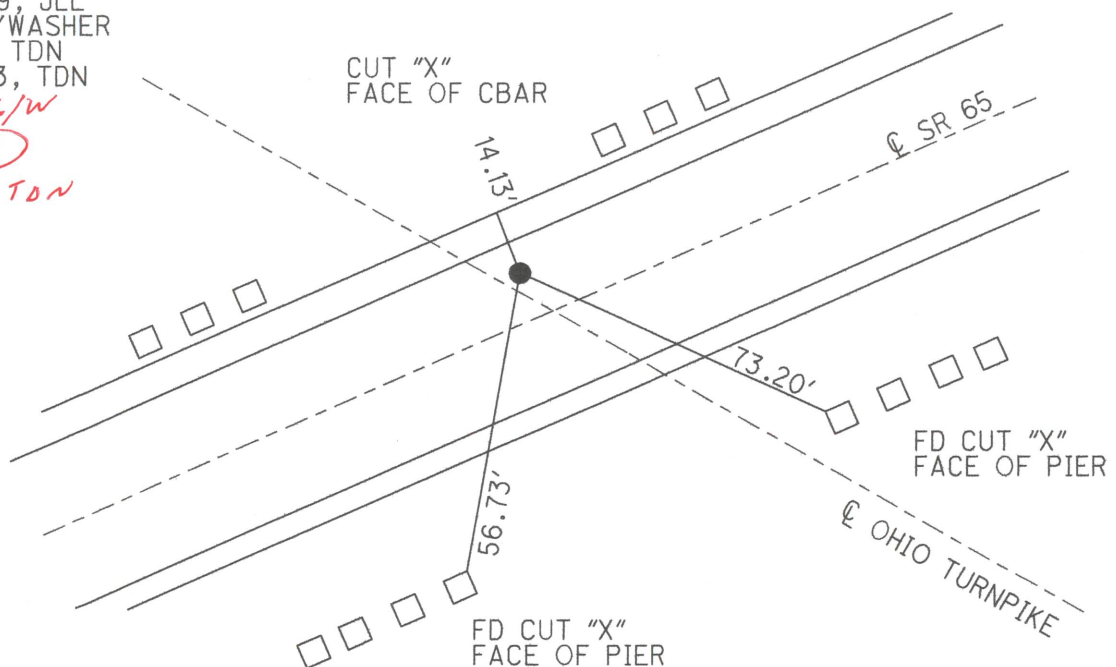
RECORD:
SET MAG/WASHER
10-28-05, SAH
FD MAG/WASHER
REFA31
11-7-2019, JLL
FD MAG/WASHER
5-8-23, TDN
10/12/23, TDN
FD MAG/W

REF31A

7/10/24, TDN

NOTE: UNDER BRIDGE

NEED TOTAL STATION



SKIP

O.D.O.T. DISTRICT 2 SURVEY OFFICE (USE ONLY)

PERSONNEL

REFERENCE NO. 31 B

SHEET 8 OF 21

NOTES AUBLE JAB

DATE 5-8-23 7/1/24

ROUTE SR 65

H.C. NIESE JAM

WEATHER CLOUDY SMRY

COUNTY WOOD

R.C. AUBLE CCB

TEMP. 55° F 70°

TOWNSHIP PERRYSBURG

SECTION RT 71

DWG BY AUBLE

PID PAVING TRAIN

T 3

12 MILE RESERVE

TYPE MONUMENT MAG SHANK

ON SURFACE - ~~BELOW~~ ON

OFFSET Q PAVEMENT 7.0' LT : RT

5.4' TO LT EDGE PAVEMENT

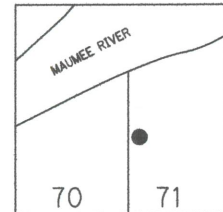
STATION: 1075+11

HORZ.DATUM: NAD83 2011

GEOID: NAVD88 2018

GRID: NORTHING: 698402.077

EASTING: 1667499.575



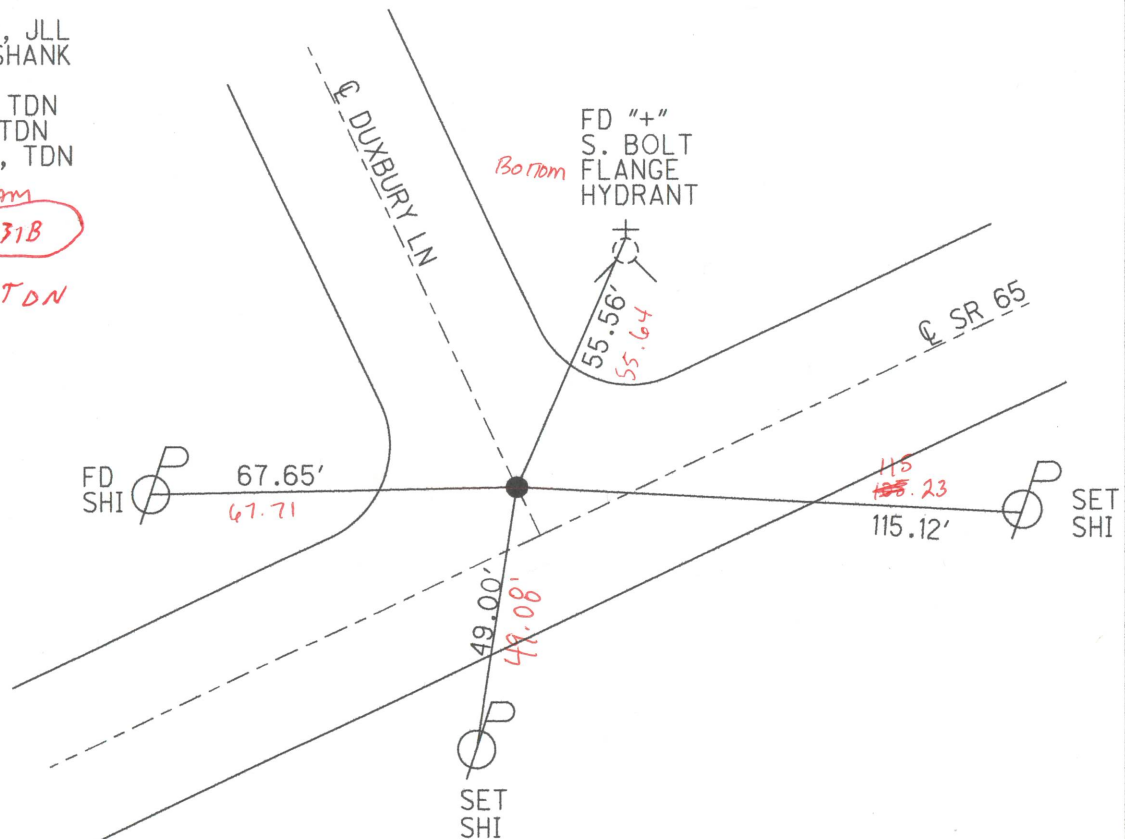
RECORD:
SET MAG/WASHER
10-28-05, SAH
FD MAG SHANK
REFB31
11-7-2019, JLL
FD MAG SHANK
REFB31
11-17-22, TDN
5-8-23, TDN
10/12/23, TDN

7/1/24 - JAM

NEW REF 31B

7/10/24, TDN

WOOD LPD:
N: 520441.196
E: 177674.557



O.D.O.T. DISTRICT 2 SURVEY OFFICE (USE ONLY)

PERSONNEL

REFERENCE NO. 32

SHEET 9 OF 21

NOTES AUBLE JAB

DATE 5-8-23 7/1/24

ROUTE SR 65

H.C. NIESE JAM

WEATHER CLOUDY SUNNY

COUNTY WOOD

R.C. AUBLE CCB

TEMP. 55° F 70°

TOWNSHIP PERRYSBURG

DWG BY RHOADES

PID PAVING TRAIN

SECTION RT 71

T 3 12 MILE RESERVE

TYPE MONUMENT MAG/WASHER

ON SURFACE - ~~BELOW~~ ON

OFFSET 4.8' LT : RT

4.8' TO LT EDGE PAVEMENT

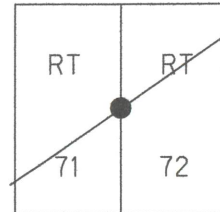
STATION: 1088+83

HORIZ.DATUM: NAD83 2011

GEOID: NAVD88 2018

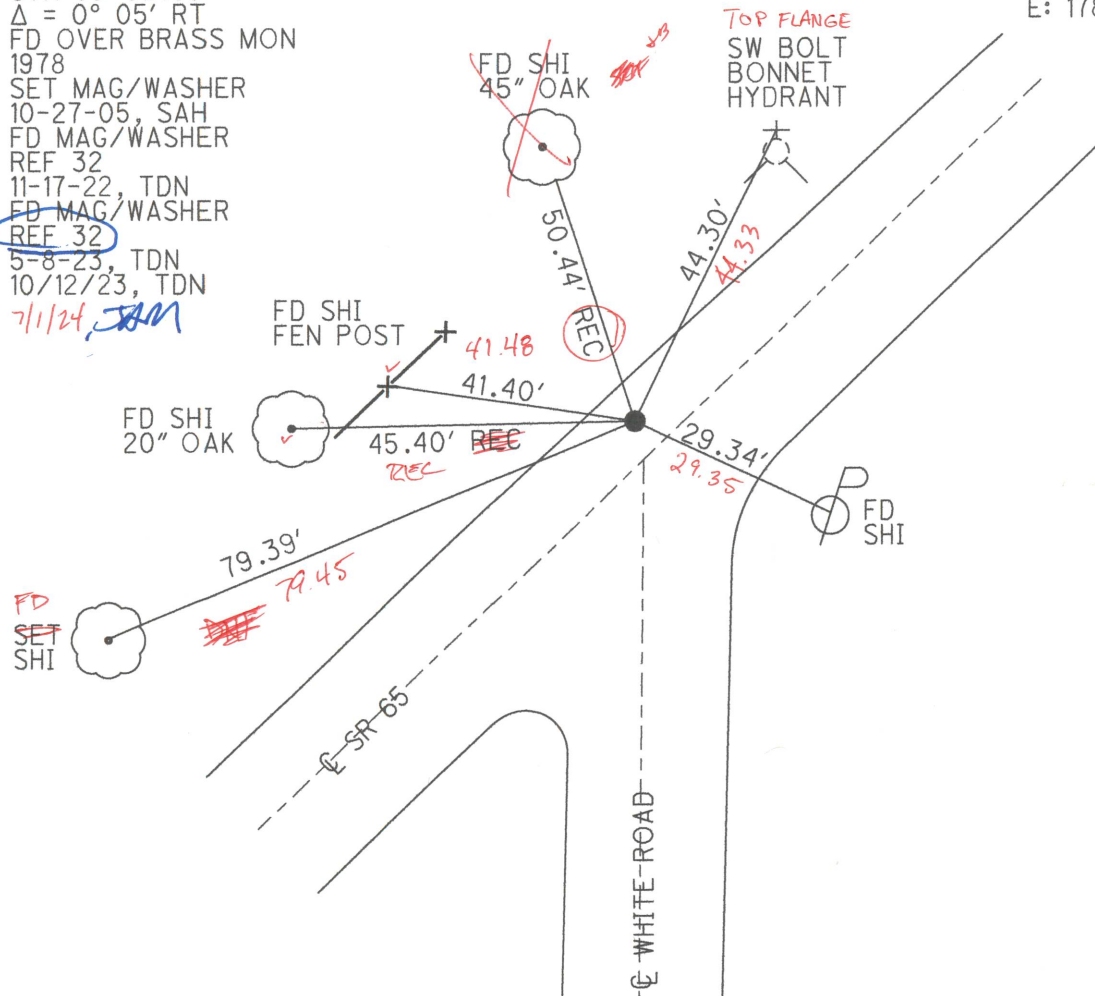
GRID: NORTHING: 699328.185

EASTING: 1668510.815



RECORD: P.I.
STA 85+02.65
 $\Delta = 0^\circ 05' RT$
FD OVER BRASS MON
1978
SET MAG/WASHER
10-27-05, SAH
FD MAG/WASHER
REF 32
11-17-22, TDN
FD MAG/WASHER
REF 32
5-8-23, TDN
10/12/23, TDN
7/1/24, JAM

WOOD LPD:
N: 521380.607
E: 178673.538



O.D.O.T. DISTRICT 2 SURVEY OFFICE (USE ONLY)

PERSONNEL

REFERENCE NO. 32 A

SHEET 10 OF 21

NOTES AUBLE JAB

DATE 5-8-23 7/1/24

ROUTE SR 65

H.C. NIESE JAM

WEATHER CLOUDY

COUNTY WOOD

R.C. AUBLE CCB

TEMP. 55° F

TOWNSHIP PERRYSBURG

SECTION RT 73

DWG BY RHOADES PID PAVING TRAIN

T 3 12 MILE RESERVE

TYPE MONUMENT MAG/WASHER

ON SURFACE - BELOW ON

OFFSET Q PAVEMENT 3.9' LT : RT

8.1' TO LT EDGE PAVEMENT

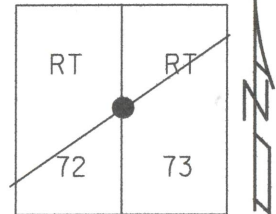
STATION: 1117+89

HORIZ.DATUM: NAD83 2011

GEOID: NAVD88 2018

GRID: NORTHING: 701287.946

EASTING: 1670654.892



RECORD: P.I.

STA. 114+07.85

$\Delta = 0^{\circ}05'$ LT

SET P.K.NAIL

ATOP I-BOLT

1937

SET MAG/WASHER

10-27-05, SAH

FD MAG/WASHER

REFA32

11-17-22, DSA

FD MAG/WASHER

5-8-23, TDN

10/12/23, TDN

FD MAG/W

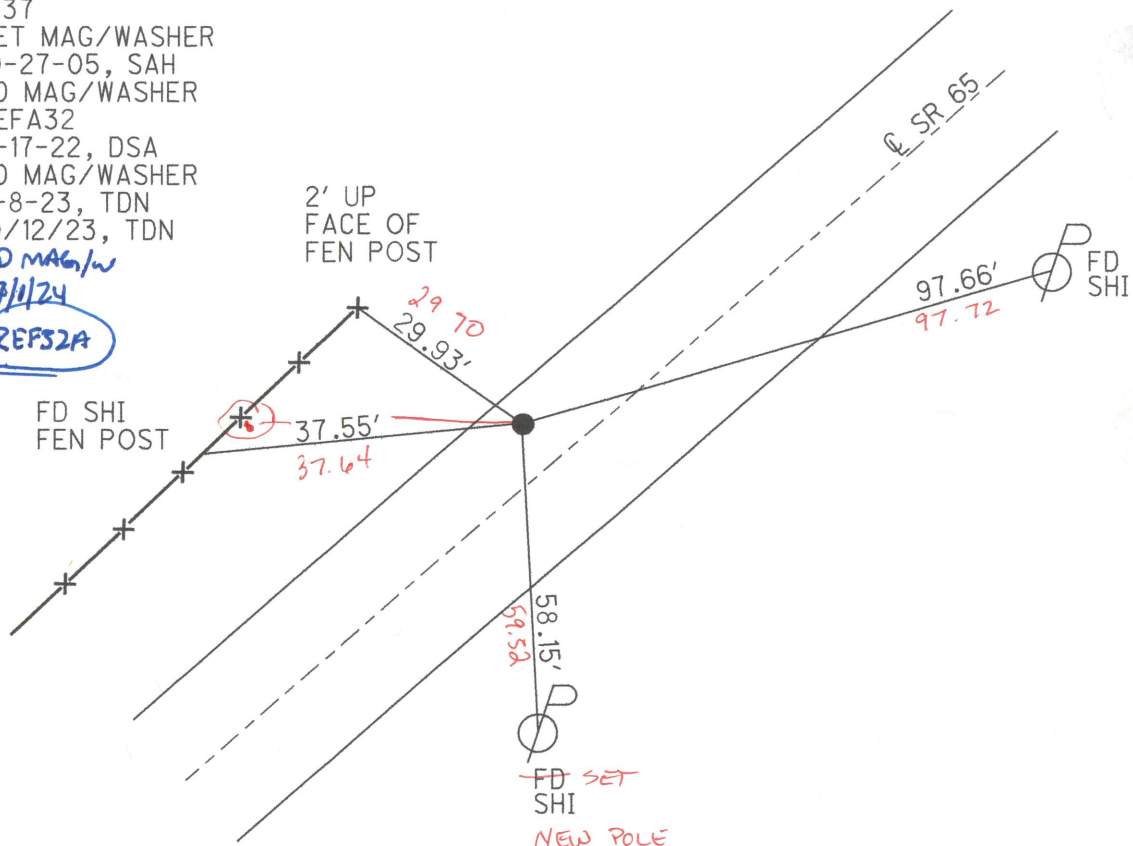
7/1/24

REFS2A

WOOD LPD:

N: 523368.573

E: 180791.672



O.D.O.T. DISTRICT 2 SURVEY OFFICE (USE ONLY)

PERSONNEL

REFERENCE NO. 32 B

SHEET 11 OF 21

NOTES AUBLE JAB

DATE 5-8-23 7/1/24

ROUTE SR 65

H.C. NIESE JAM

WEATHER CLOUDY SUNNY

COUNTY WOOD

R.C. AUBLE CCB

TEMP. 55° F

TOWNSHIP PERRYSBURG

DWG BY RHOADES PID PAVING TRAIN

SECTION RT 75

T 3 12 MILE RESERVE

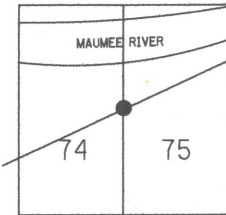
TYPE MONUMENT MAG/WASHER

ON SURFACE - ~~BELOW~~ ON

OFFSET Q PAVEMENT 5.7' LT : RT

8.3' TO LT EDGE PAVEMENT

STATION: 1142+70



HORZ.DATUM: NAD83 2011

GEOID: NAVD88 2018

GRID: NORTHING: 701287.946

EASTING: 1670654.892

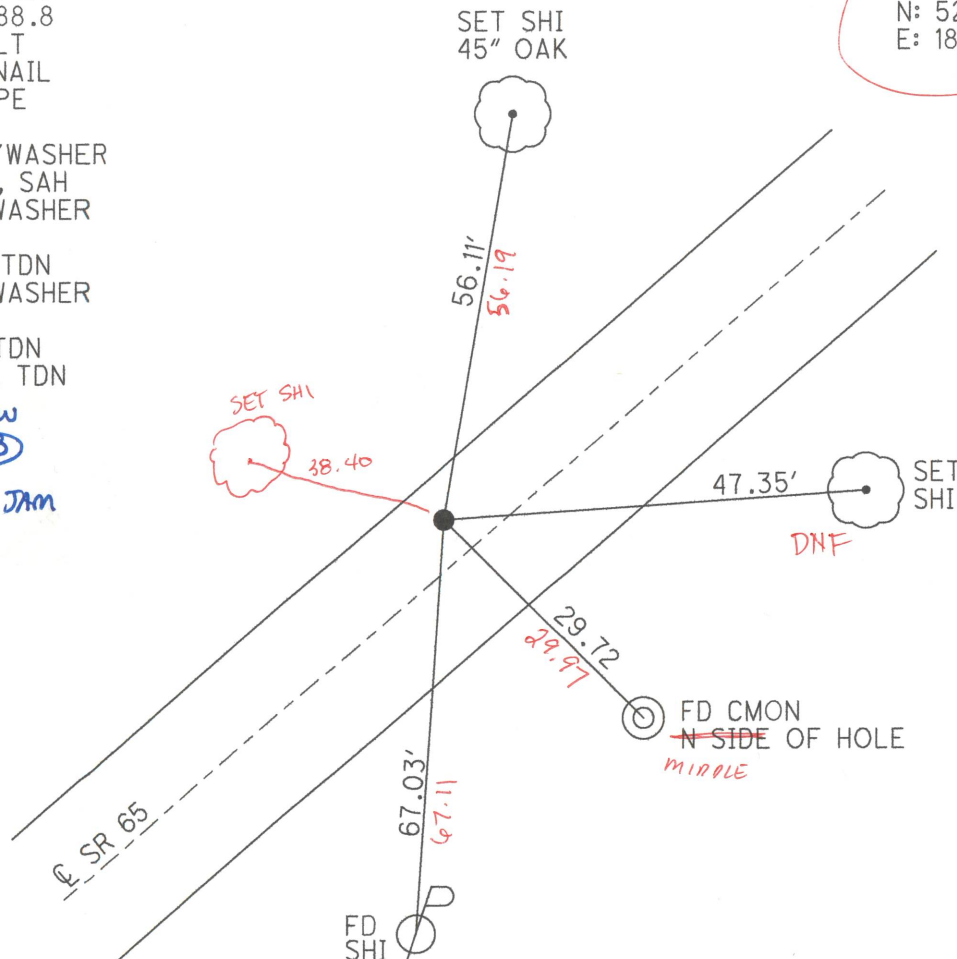
RECORD: P.I.
STA.138+88.8
 $\Delta=0^{\circ}30'$ LT
SET P.K.NAIL
ATOP IPIPE
1937
SET MAG/WASHER
10-27-05, SAH
FD MAG/WASHER
REF32B
11-17-22, TDN
FD MAG/WASHER
REF32B
5-8-23, TDN
10/12/23, TDN

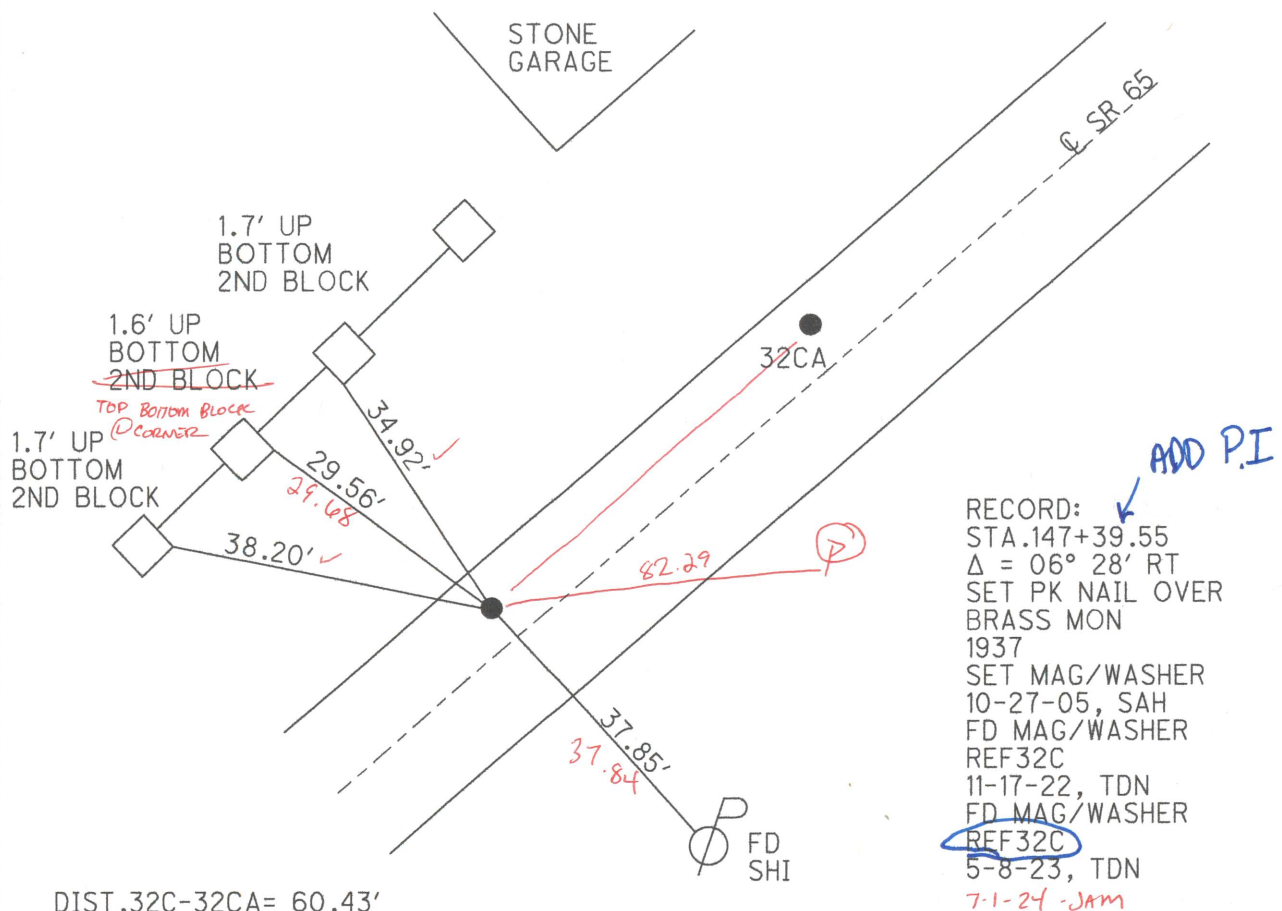
FD MAG/W

REF32B

7/1/24, JAM

LDP
WOOD ~~LPD~~:
N: 525066.922
E: 182597.864





O.D.O.T. DISTRICT 2 SURVEY OFFICE (USE ONLY)

PERSONNEL

REFERENCE NO. 32 CA

SHEET 13 OF 21

NOTES AUBLE JAB

DATE 5-8-23 7/1/24

ROUTE SR 65

H.C. NIESE JAM

WEATHER CLOUDY SUNNY

COUNTY WOOD

R.C. AUBLE CCB

TEMP. 55° F 70°

TOWNSHIP PERRYSBURG

DWG BY RHOADES

PID PAVING TRAIN

SECTION RT 75

T 3 12 MILE RESERVE

TYPE MONUMENT MAG/WASHER

ON SURFACE - ~~BELOW~~ ON

OFFSET Q PAVEMENT 5.7' LT : RT

6.2' TO LT EDGE PAVEMENT

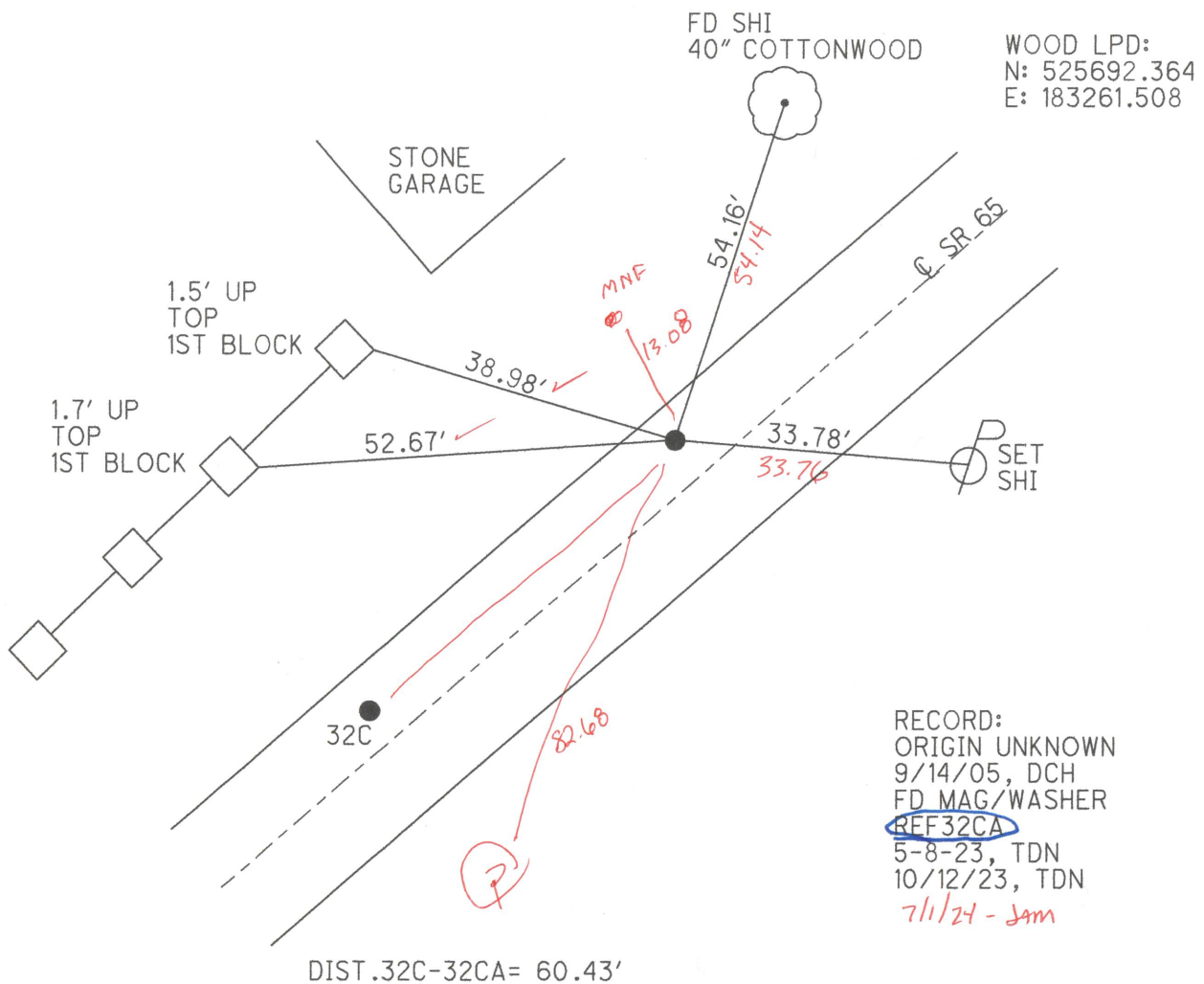
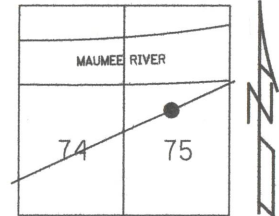
STATION: 1151+82

HORZ.DATUM: NAD83 2011

GEOID: NAVD88 2018

GRID: NORTHING: 703578.847

EASTING: 1673155.060



O.D.O.T. DISTRICT 2 SURVEY OFFICE (USE ONLY)

PERSONNEL

REFERENCE NO. 32 CB

SHEET 14 OF 21

NOTES AUBLE JAB

DATE 5-8-23 7/1/24

ROUTE SR 65

H.C. MESE JAM

WEATHER CLOUDY SUNNY

COUNTY WOOD

R.C. AUBLE JAB

TEMP. 55° F 78° 68°

TOWNSHIP PERRYSBURG

SECTION RT 75

DWG BY RHOADES

PID PAVING TRAIN

T 3 12 MILE RESERVE

TYPE MONUMENT MAG SHANK

ON SURFACE - BELOW ON

OFFSET Q PAVEMENT 0.3' LT : RT

10.8' TO LT EDGE PAVEMENT

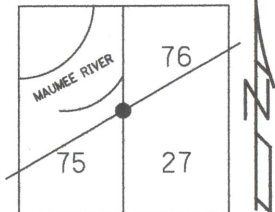
STATION: 1160+35

HORZ.DATUM: NAD83 2011

GEOID: NAVD88 2018

GRID: NORTHING: 704083.837

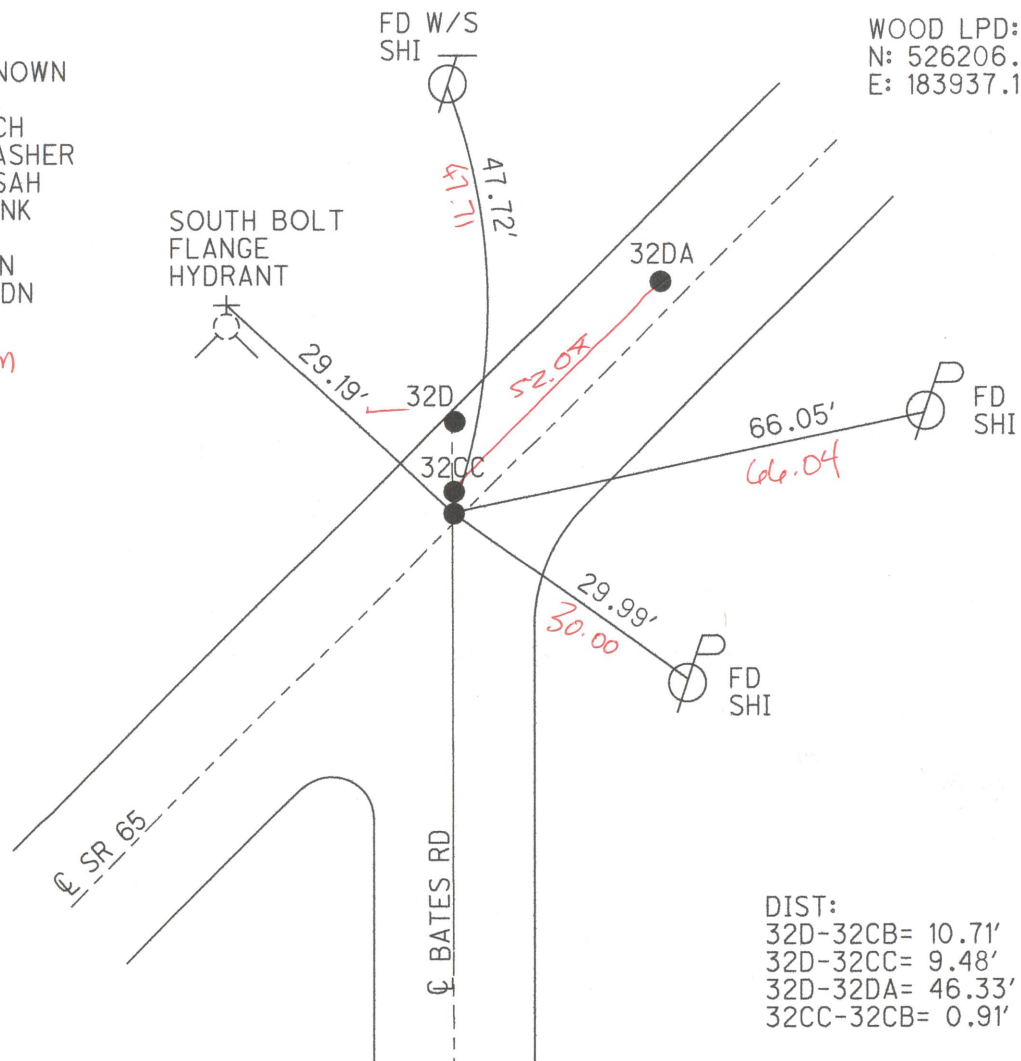
EASTING: 1673837.423



RECORD:
ORIGIN UNKNOWN
FD P.K.NAIL
9/14/05, DCH
SET MAG/WASHER
10/27/05, SAH
FD MAG SHANK
REF32CB
5/8/23, TDN
10/12/23, TDN

FD SHANK
7/1/24 - JAM

WOOD LPD:
N: 526206.336
E: 183937.179



DIST:
32D-32CB= 10.71'
32D-32CC= 9.48'
32D-32DA= 46.33'
32CC-32CB= 0.91'

O.D.O.T. DISTRICT 2 SURVEY OFFICE (USE ONLY)

PERSONNEL

REFERENCE NO. 32 CC

SHEET 15 OF 21

NOTES AUBLE JAB

DATE 5-8-23 7/1/24

ROUTE SR 65

H.C. NIESE JAM

WEATHER CLOUDY SUNNY

COUNTY WOOD

R.C. AUBLE JAB

TEMP. 55° F 60°

TOWNSHIP PERRYSBURG

SECTION RT 75

DWG BY RHOADES

PID PAVING TRAIN

T 3

12 MILE RESERVE

TYPE MONUMENT MAG/WASHER

ON SURFACE - ~~BELOW~~ ON

OFFSET 1.2' LT : RT

9.9' TO LT EDGE PAVEMENT

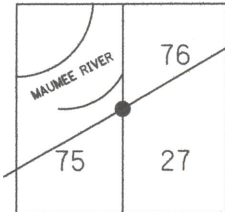
STATION: 1160+35

HORZ.DATUM: NAD83 2011

GEOID: NAVD88 2018

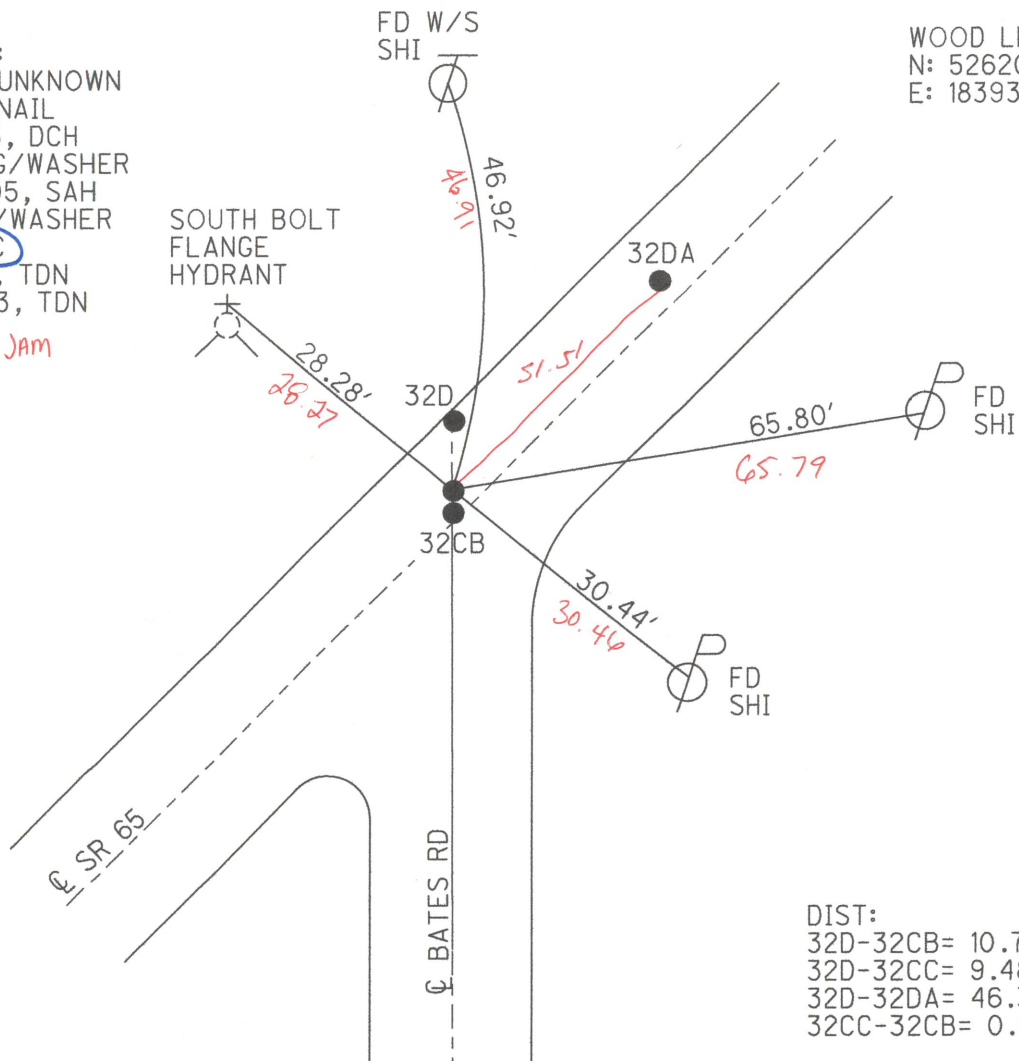
GRID: NORTHING: 704084.736

EASTING: 1673837.378



RECORD:
ORIGIN UNKNOWN
FD P.K.NAIL
9/14/05, DCH
SET MAG/WASHER
10/27/05, SAH
FD MAG/WASHER
REF32CC
5/8/23, TDN
10/12/23, TDN
7/1/24 - JAM

WOOD LPD:
N: 526207.235
E: 183937.122



DIST:
32D-32CB= 10.71'
32D-32CC= 9.48'
32D-32DA= 46.33'
32CC-32CB= 0.91'

O.D.O.T. DISTRICT 2 SURVEY OFFICE (USE ONLY)

PERSONNEL

REFERENCE NO. 32 D

SHEET 16 OF 21

NOTES AUBLE JAB

DATE 5-8-23 7/1/24

ROUTE SR 65

H.C. NIESE JAM

WEATHER CLOUDY SUNNY

COUNTY WOOD

R.C. AUBLE JAB

TEMP. -55° F 68°

TOWNSHIP PERRYSBURG

DWG BY RHOADES

PID PAVING TRAIN

SECTION RT 75

T 3 12 MILE RESERVE

TYPE MONUMENT MAG/WASHER

ON SURFACE - ~~BELOW~~ ON

OFFSET Q PAVEMENT 10.9' LT : RT

1.0' TO LT EDGE PAVEMENT

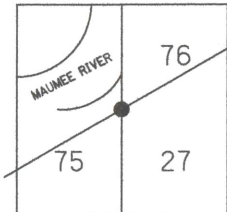
STATION: 1160+37

HORZ.DATUM: NAD83 2011

GEOID: NAVD88 2018

GRID: NORTHING: 704094.544

EASTING: 1673837.437



RECORD:

STA 156+49.15

$\Delta = 0^\circ 0'$

SET P.K.NAIL

1937

FD IPIN

6" DOWN

9/14/05, DCH

SET MAG/WASHER

10-27-05, SAH

FD MAG/WASHER

REF32D

5-8-23, TDN

10/12/23, TDN

7/1/24 - JAM

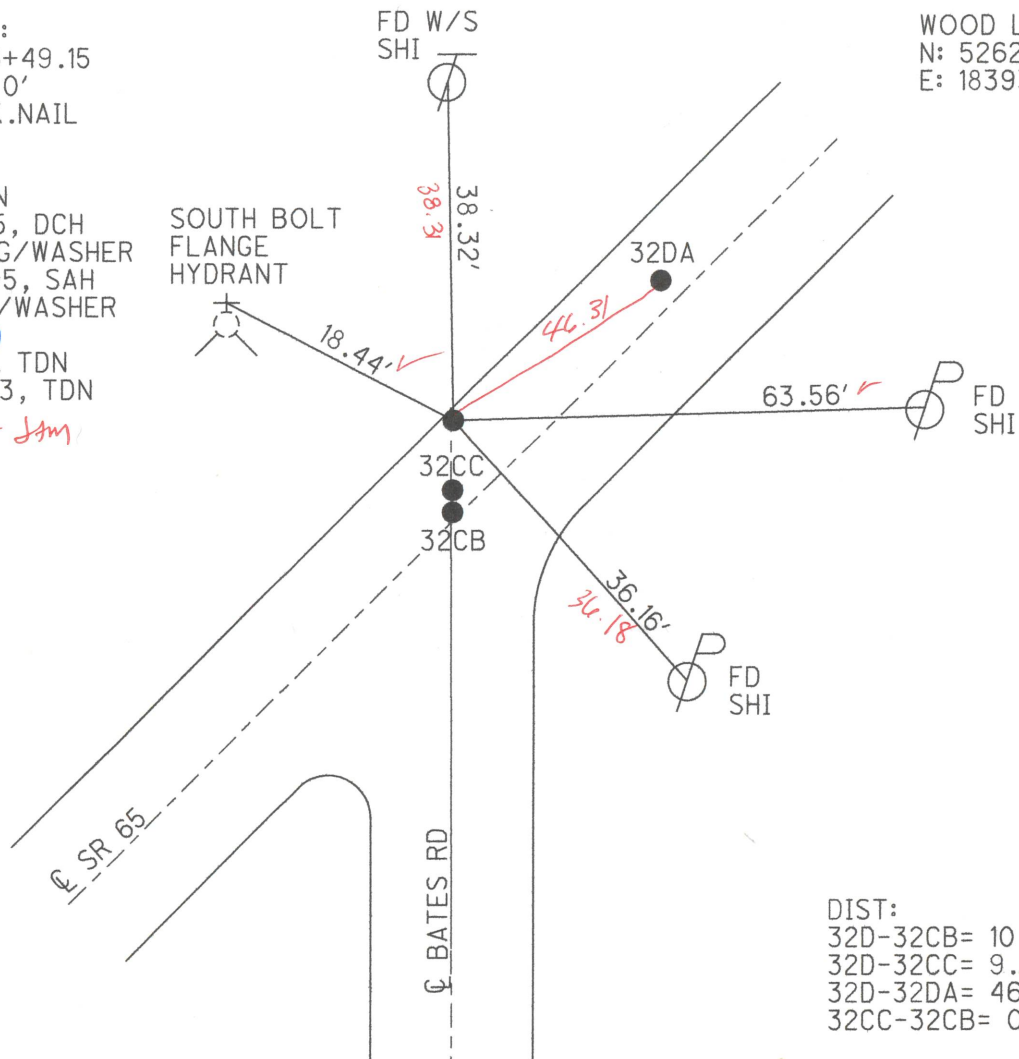
FD W/S
SHI

WOOD LPD:

N: 526217.043

E: 183937.051

SOUTH BOLT
FLANGE
HYDRANT



DIST:

32D-32CB= 10.71'

32D-32CC= 9.48'

32D-32DA= 46.33'

32CC-32CB= 0.91'

O.D.O.T. DISTRICT 2 SURVEY OFFICE (USE ONLY)

PERSONNEL

REFERENCE NO. 32 DA

SHEET 17 OF 21

NOTES AUBLE JAB

DATE 5-8-23 7/1/24

ROUTE SR 65

H.C. NIESE JAM

WEATHER CLOUDY SUNNY

COUNTY WOOD

R.C. AUBLE JAB

TEMP. 55° F 68°

TOWNSHIP PERRYSBURG

SECTION RT 76

DWG BY RHOADES

PID PAVING TRAIN

T 3 12 MILE RESERVE

TYPE MONUMENT MAG/WASHER

ON SURFACE - ~~BELOW~~ ON

OFFSET Q PAVEMENT 1.2' LT : RT

10.9' TO LT EDGE PAVEMENT

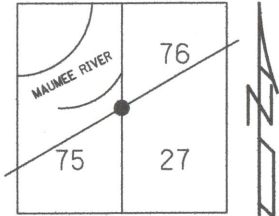
STATION: 1160+87

HORIZ.DATUM: NAD83 2011

GEOID: NAVD88 2018

GRID: NORTHING: 704115.381

EASTING: 1673878.811

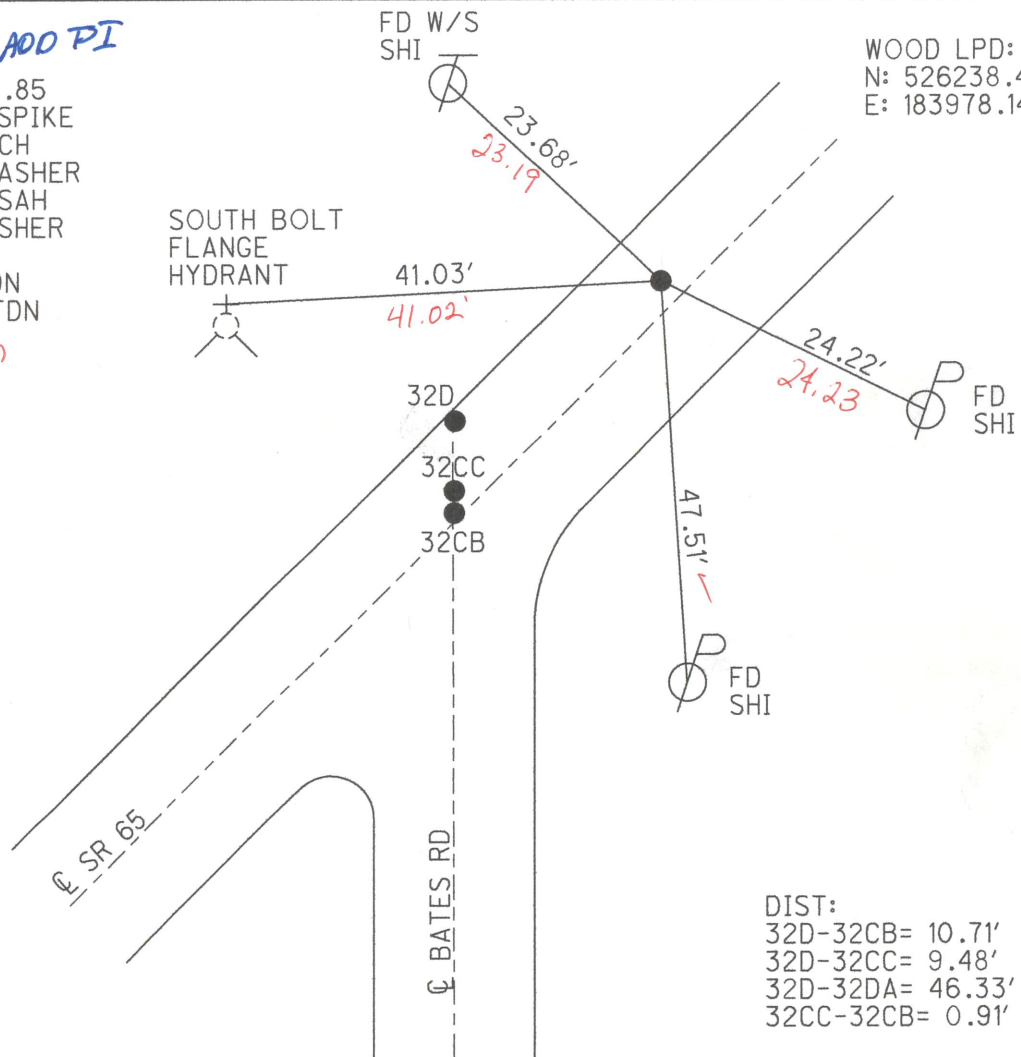


RECORD: ADD PI
 STA.157+00.85
 FD SM.R.R.SPIKE
 9/14/05, DCH
 SET MAG/WASHER
 10/27/05, SAH
 FD MAG/WASHER
REF32DA
 5/8/23, TDN
 10/12/23, TDN
 7/1/24 - JAM

SOUTH BOLT
 FLANGE
 HYDRANT

FD W/S
 SHI

WOOD LPD:
 N: 526238.425
 E: 183978.148



DIST:
 32D-32CB= 10.71'
 32D-32CC= 9.48'
 32D-32DA= 46.33'
 32CC-32CB= 0.91'

O.D.O.T. DISTRICT 2 SURVEY OFFICE (USE ONLY)

PERSONNEL

REFERENCE NO. 35

SHEET 9 OF 12

NOTES ~~BARNHISEL~~ JAB

DATE 4-24-91

ROUTE SR 65

H.C. ~~LOEHEKE~~ Jam

WEATHER CLOUDY

COUNTRY WOOD

R.C. HOFFMAN JAB

TEMP. 58° F

TOWNSHIP ROSSFORDDWG BY AUBLE

PID 90674

T_8_N N_11_E

TYPE MONUMENT PK NAIL

ON SURFACE - ~~BELOW~~ ON

OFFSET C PAVEMENT 5.8' LT : ~~RT~~

TO - EDGE PAVEMENT

STATION: 1198+18

HORZ.DATUM: NAD83 (2011)

GEOID: 18

GRID: NORTHING: 706739.871

EASTING: 1676540.680

79	80	81	82	83
78				
77			SEC	
76			23	

RECORD:

FD P.K. NAIL

4/24/91, MB

SET PK/WASHER

5-31-91, MB

CITY OF ROSSFORD
 TO BE HONORED

TO SET MONBOX

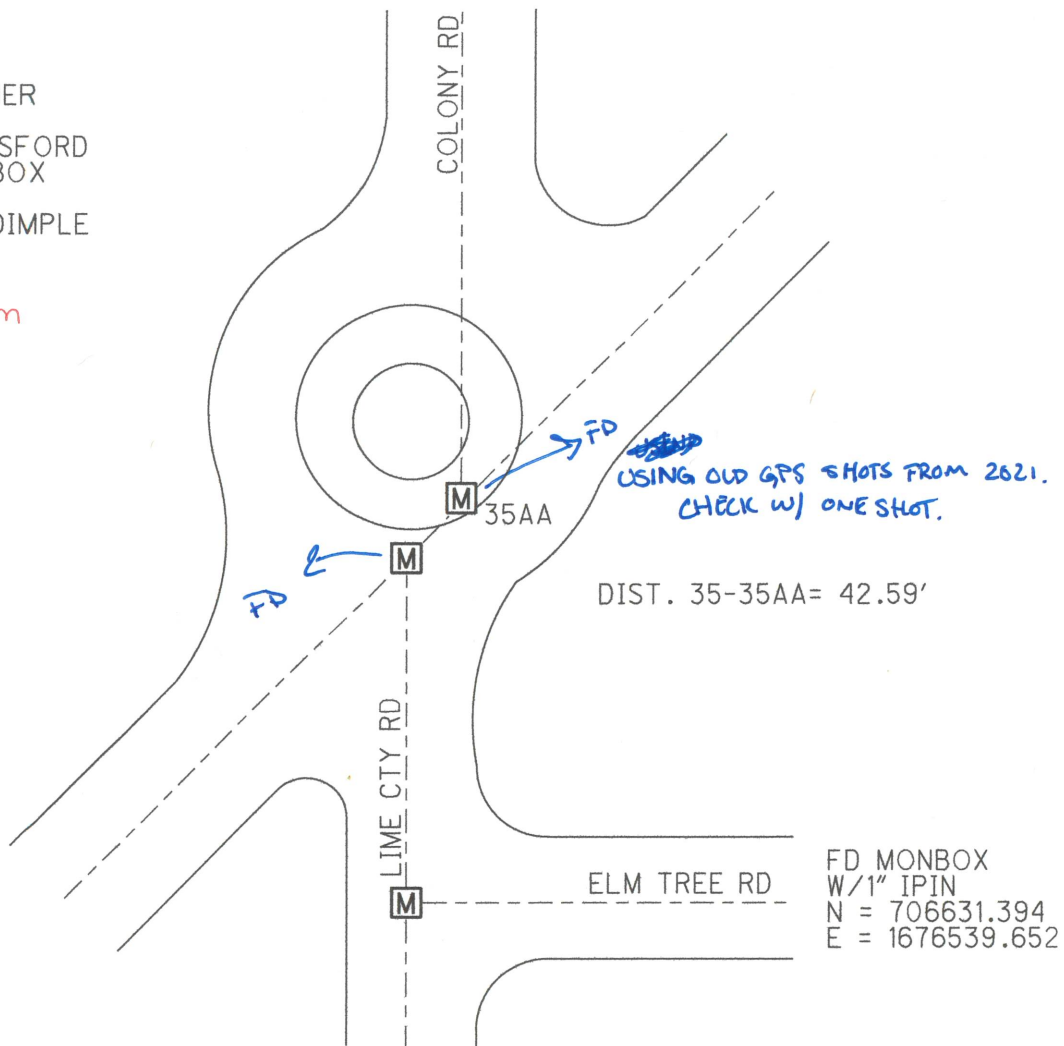
FD MONBOX

W/1" IPIN & DIMPLE

REF35

10-5-21, DSA

FD 7/1/24 JAM



FD MONBOX
W/1" IPIN
N = 706631.394
E = 1676539.652